



Basics of Genetic Genealogy & Joining the Project

Using Genetic Genealogy as a lens into our Nuevomexicano history.

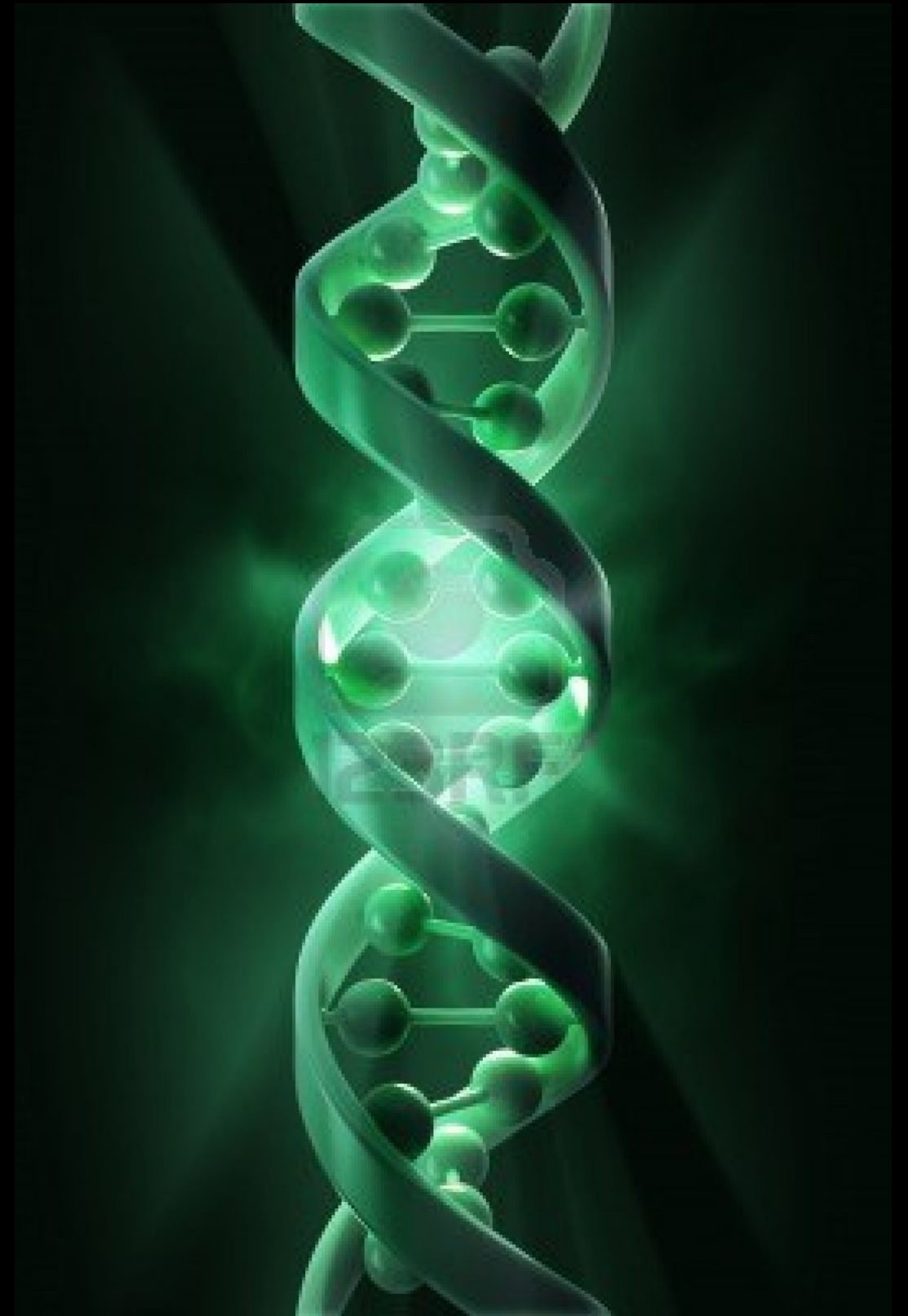
Miguel A. Tórrez
Project Administrator

TESTS FOR GENETIC GENEALOGY

Y-DNA = DIRECT PATERNAL

MTDNA = DIRECT MATERNAL

AUTOSOMAL = INHERITANCE
FROM ALL ANGLES



PROJECT GOALS

- To validate genealogies tracing back to their known origin in New Mexico using Y-DNA and mtDNA testing.

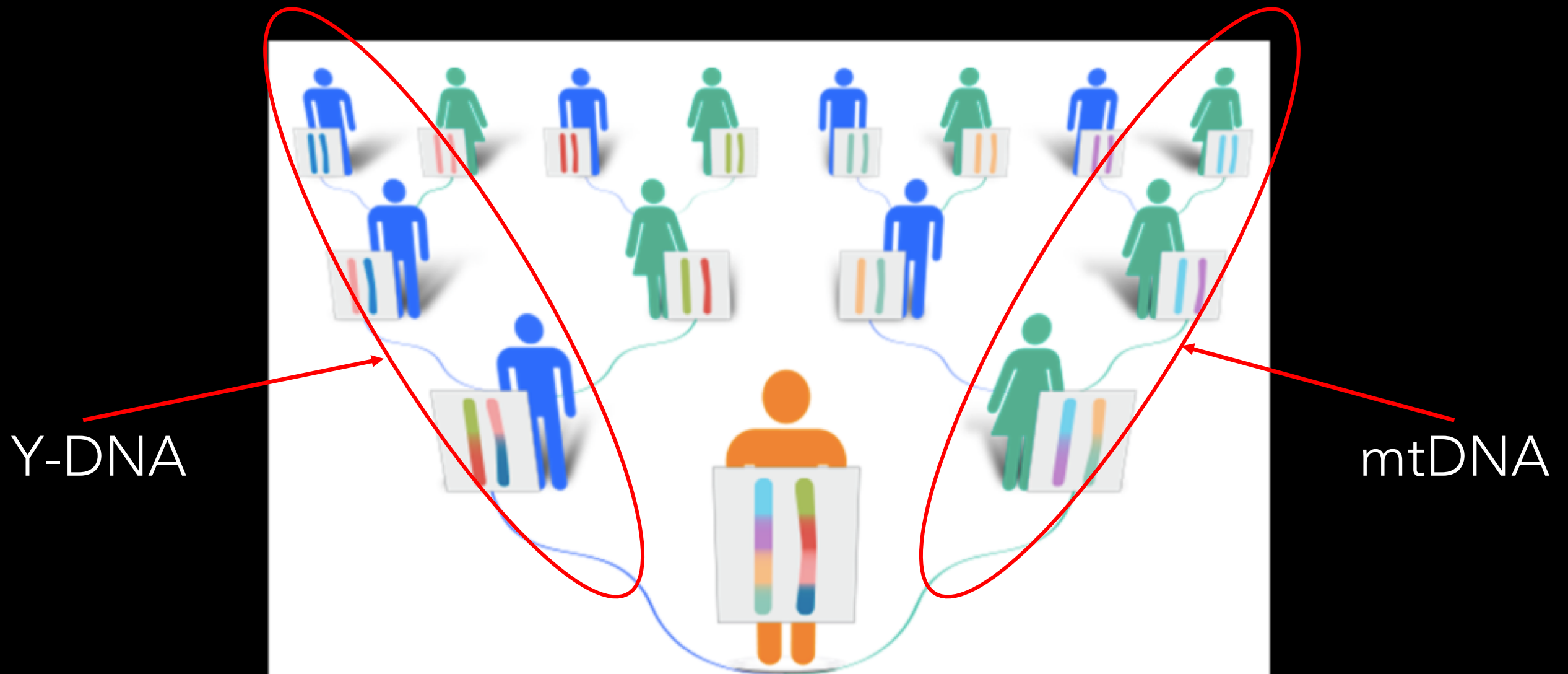


Image courtesy of FTDNA

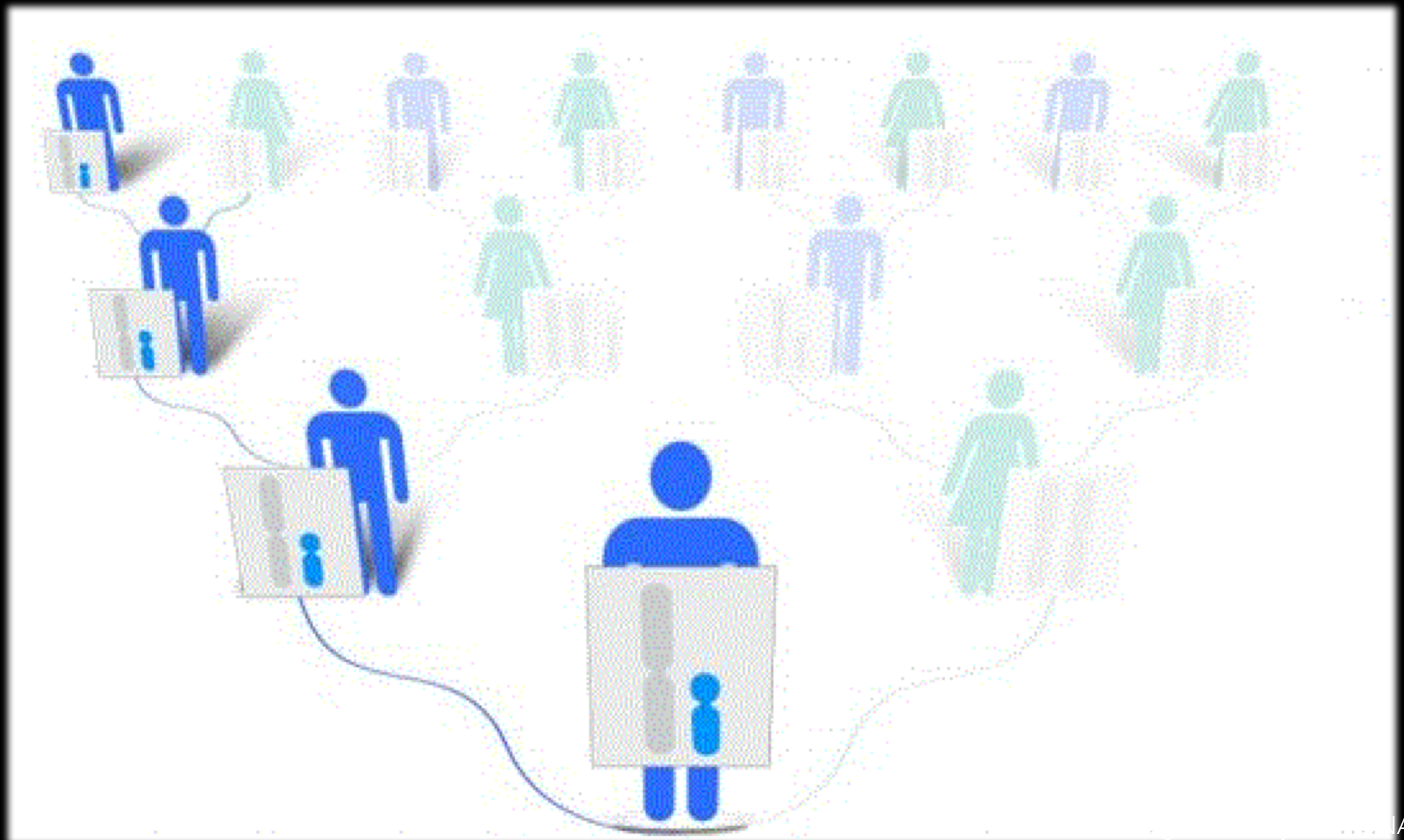
WHO QUALIFIES TO BE A PARTICIPANT?

- Anyone who has Y-DNA or mtDNA results via Family Tree DNA (FTDNA), has a New Mexico genealogical history and is an NMGS Society member.
- Anyone with ONLY autosomal results, known as Family Finder at FTDNA **aren't allowed to join** the project because the results are of wide spread inheritance across the family tree and not only from a direct paternal (Y-DNA) or direct maternal (mtDNA) line.

Y-DNA

- Y-DNA traces a direct paternal line.
 - Only males can test Y-DNA.
 - Testing a direct paternal line can compare a surname against others who have tested Y-DNA with the same surname, or others within the match list to compare common ancestral connections.
 - For lines that have dead ends or questionable genealogies, the results can provide clues via their matches.

Y-DNA



MTDNA

- mtDNA traces a maternal line.
 - Mother's pass down their mtDNA to both sons and daughters so both males and females can test mtDNA .
 - Only daughters continue the pass down of mtDNA to their children.
 - A son's children will inherit their mother's mtDNA.

MTDNA

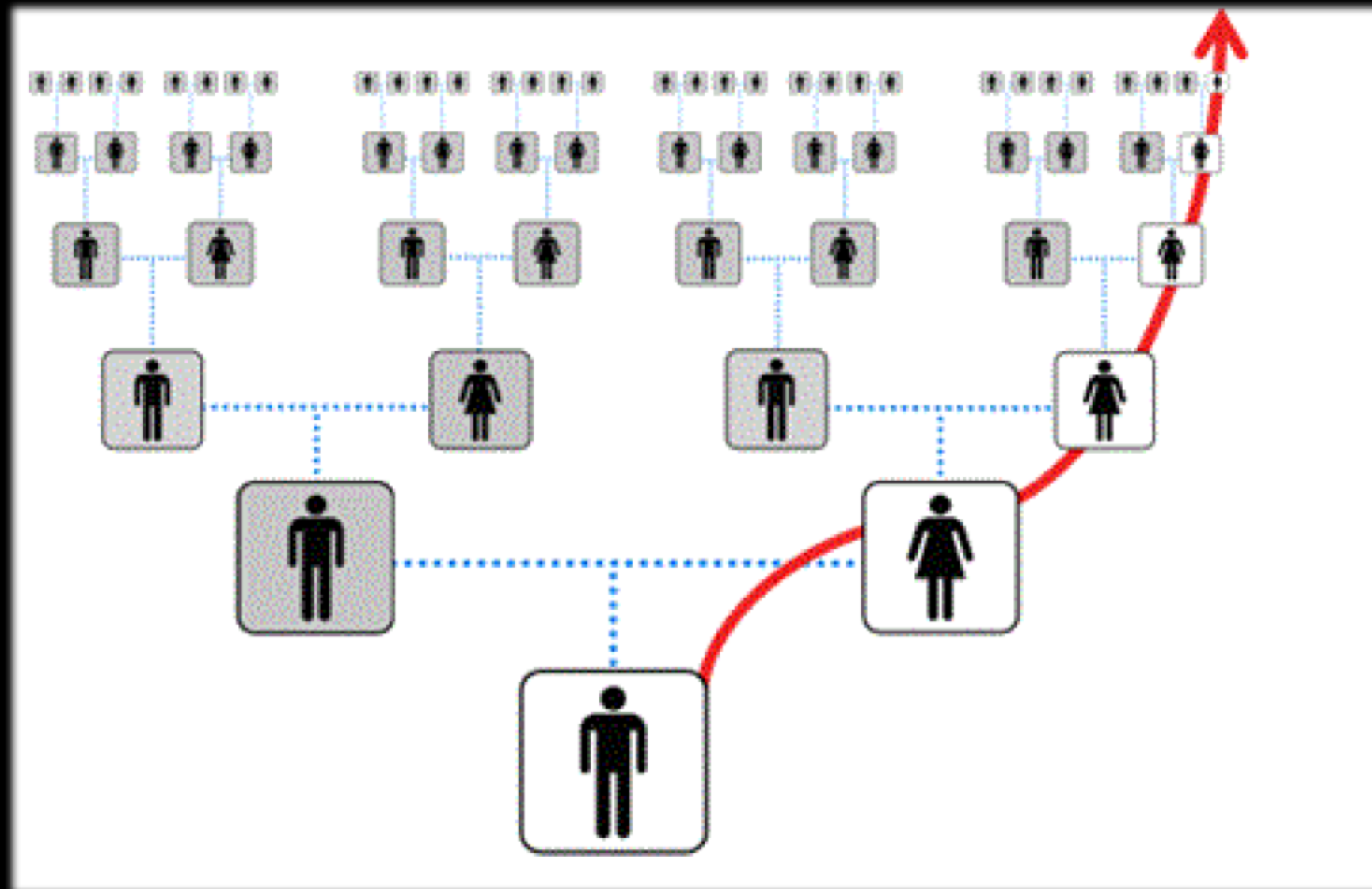


Image courtesy of FTDNA

AUTOSOMAL DNA "FAMILY FINDER"

- FTDNA states that Family Finder results are "designed to find living relatives on all of your ancestral lines within the last five generations and can also give you a breakdown of your ethnic makeup by percentage".
- You may gather information from your father's line or your mother's line but it does not tell us what the direct ancestral Y-DNA or mtDNA line is, therefore this test alone does not qualify for genealogical validation or consultation. A person who only has Family Finder results via FTDNA can easily upgrade to Y-DNA/mtDNA (gender specific) and take advantage of our services.

AUTOSOMAL DNA "FAMILY FINDER"

- Family Tree allows 3rd party autosomal DNA transfers from 23andMe and Ancestry.com for free. A transfer will import the Origins data into FTDNA, however to find matches a one time fee to unlock matches will need to be completed.
- If a person who has transferred autosomal DNA from a 3rd party would like to add a Y-DNA or mtDNA test, a new order and kit (swab) will need to be ordered. This is because only data from the 3rd party is transferred, not DNA. To keep all tests associated with the same kit, first complete the transfer and then from your profile add the additional tests.
- FTDNA contact: 713-868-1438

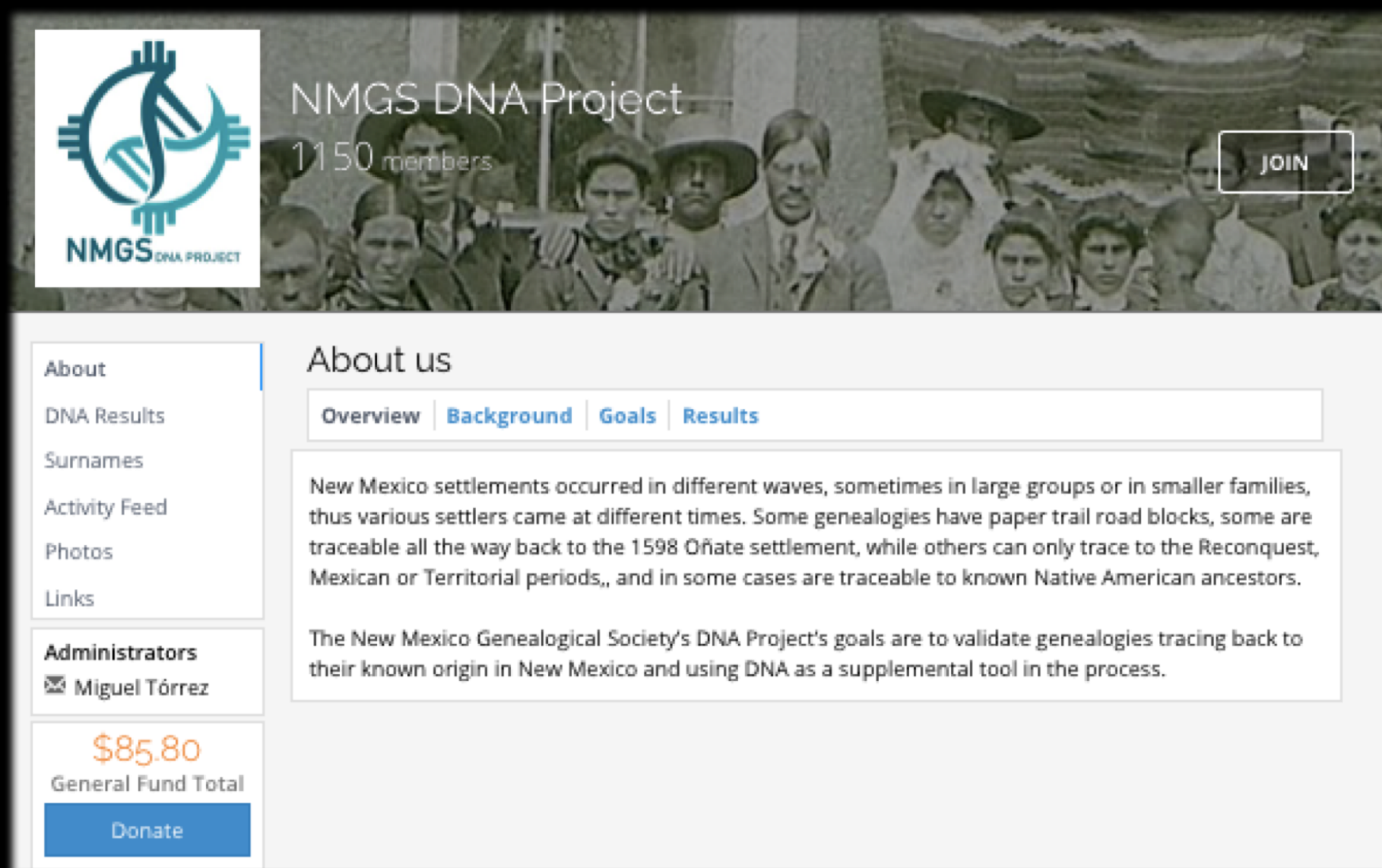
HOW TO JOIN THE
NMGS DNA
PROJECT!

IN SIX STEPS



Purchase your Y-DNA or mtDNA kit
from FTDNA (project link preferred)

Swab your cheek and drop your
sample in the mail to FTDNA



The screenshot shows the homepage of the NMGS DNA Project website. The header features a logo on the left, a title and member count in the center, and a 'JOIN' button on the right. Below the header is a navigation menu with links to 'About', 'DNA Results', 'Surnames', 'Activity Feed', 'Photos', and 'Links'. A sidebar on the left contains an 'Administrators' section listing Miguel Tórrez and a 'General Fund Total' of \$85.80 with a 'Donate' button. The main content area is titled 'About us' and includes tabs for 'Overview', 'Background', 'Goals', and 'Results'. The 'Background' tab is selected, displaying text about the project's goals and history.

NMGS DNA Project
1150 members [JOIN](#)

About
DNA Results
Surnames
Activity Feed
Photos
Links

Administrators
✉ Miguel Tórrez

\$85.80
General Fund Total
[Donate](#)

About us
[Overview](#) | [Background](#) | [Goals](#) | [Results](#)

New Mexico settlements occurred in different waves, sometimes in large groups or in smaller families, thus various settlers came at different times. Some genealogies have paper trail road blocks, some are traceable all the way back to the 1598 Oñate settlement, while others can only trace to the Reconquest, Mexican or Territorial periods,, and in some cases are traceable to known Native American ancestors.

The New Mexico Genealogical Society's DNA Project's goals are to validate genealogies tracing back to their known origin in New Mexico and using DNA as a supplemental tool in the process.

Fill out lineage form(s), Y-DNA and mtDNA to the best of your ability using source citations.



NMGS DNA Project

Name: |
KIT:
email:



Fill out the below form and email to nmgdna@gmail.com

Save the document as a .doc so that the people validating the genealogy and your resources can insert their comments into the blocks. Documents sent as a .pdf format will not be accepted.

Generation #1 – Person Tested	Date/Event	Source Material
Name of person tested		Per applicant

Generation #2 – Parents	Date/Event	Source Material
Father of Gen #1 and his wife's name		

Generation #3 – Grandparents	Date/Event	Source Material
Parents of Generation #2 and his wife's name		

**New Mexico Genealogical Society's
DNA Project (NMGS-GGP)**

Miguel A. Tórrez, Chair

Name of person who tested:

Kit number: _____

Circle one (or both): YDNA or mtDNA

Email: _____

Phone: _____

If you are not the person tested but manage the DNA results, do you have their
permission? Yes / No

And your name is:

Sign the NMGS DNA
Project JOIN (agreement)
form

Find Forms on our
Website:

www.nmgs.org/nmgs-dna-project

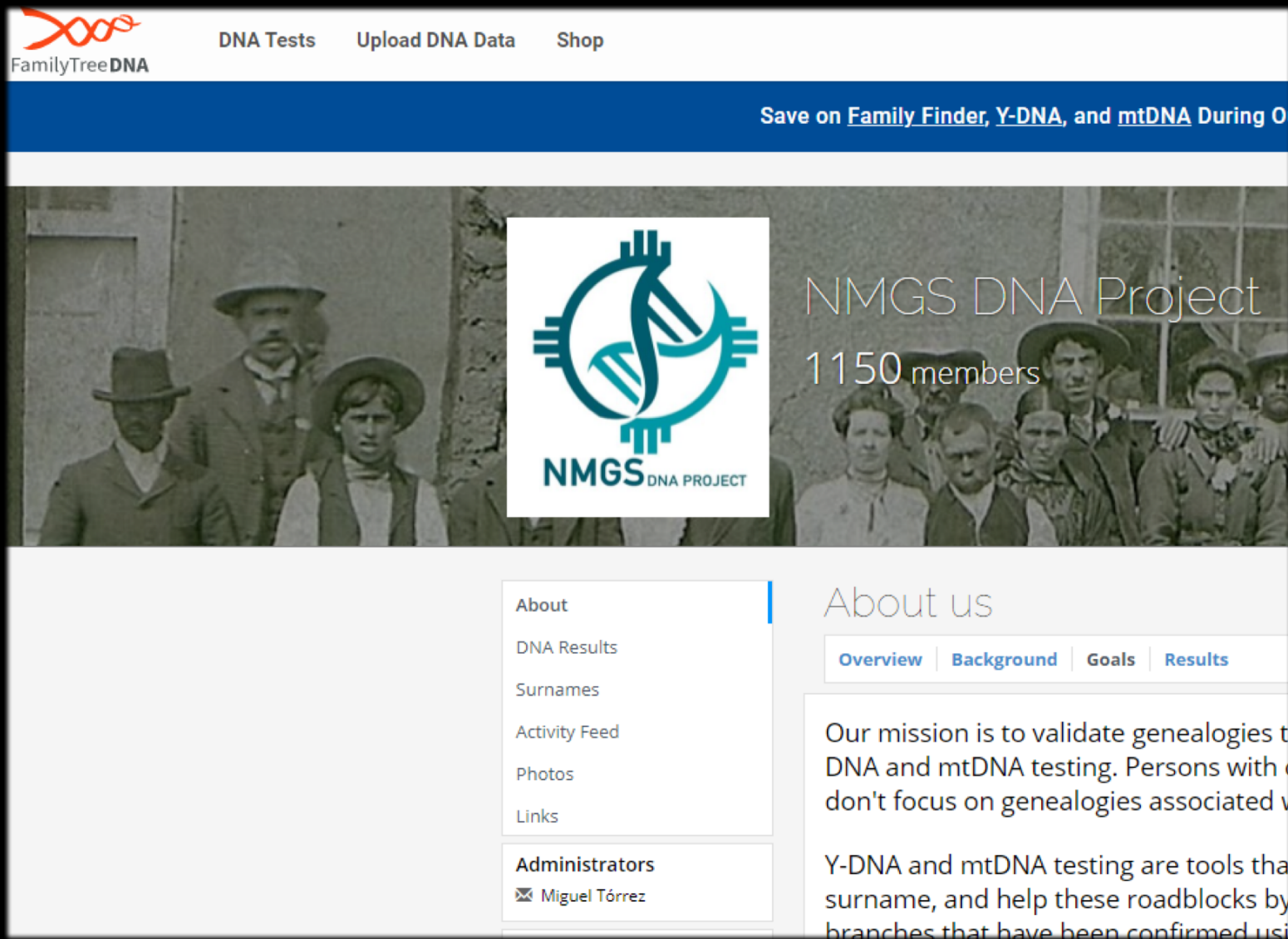
Send forms via email to:

Miguel A. Tórrrez
nmgsgdna@gmail.com

or via USPS to:

PO Box 1262
Santa Cruz, NM
87567-1262





Change Settings

Mark Advanced Access
which gives the
administrator access to
update last known
ancestors with *

Wait for your DNA results to process.
This usually takes 4-8 weeks.

Wait for an email from the NMGS
DNA project Administrator with your
verified and validated lineage !

